



## INNOVATIVE DESIGN - INCORPORATING THE VISIONARY TEAM

Throughout our history, EUA has helped school systems and communities across Wisconsin achieve their goals through comprehensive educational programming and design. Successful outcomes begin with a commitment to listening and learning, before designing. Engaging the right people, at the right time, through a "visionary team" process requires a hands-on, interactive experience. We are committed to this work as an important first step to designing spaces to meet the needs of students, staff and the community.

The majority of the visioning process occurs, as part of a comprehensive planning strategy, in the post referendum phase. Contrary to traditional design processes where veteran staff guide decisions, EUA encourages districts to develop a visionary team of progressive thinkers. We seek and value 'out of the box' thinking as it concerns spaces that facilitate multiple teaching methods, promote effective learning environments and inspire student and staff achievement. EUA leverages progressive design, collaboration, education and visual examples to begin the conversation that challenges the past and builds ownership for the future.

Over the course of several weeks, EUA will work with your visionary team to build upon the previous sessions including school tours. As such, regular participation with a consistent team is highly recommended. The visionary team is asked to discuss their experience and learning with their peers after each meeting. This allows for peer interaction and feedback that will inform deeper conversations and planning. It encourages questions and dialogue that builds understanding for design ideas and furthers the "why" behind the work. The visionary team is a key driver for change.

Who is a good candidate for the visionary team?

- Successful at engaging all students
- Willing to flex to different learning styles
- Regularly collaborate with peers
- Successful problem solvers
- Regularly creates "positives from negatives"
- Well respected by peers - an influencer
- A good communicator
- Someone who can "see beyond what they know"

How many people make up the visionary team?

- The size can range from around 5 to 10

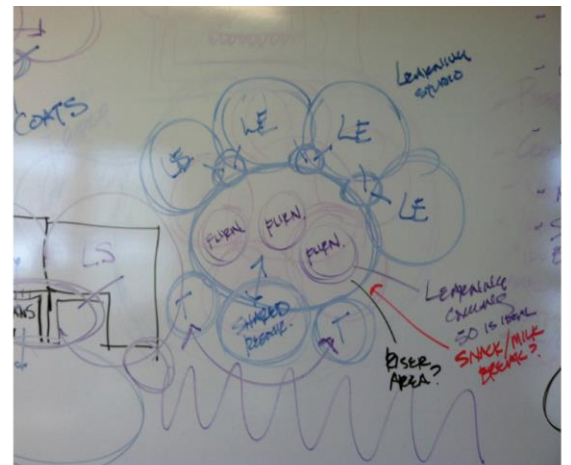
What is the visionary team member mix?

- School Principal
- Possibly District Administrator/Superintendent who can emphasize district/board values
- Teachers from every grade or a collection of teachers that work well together
- No more than two specialists (SE/LD/CD, reading, speech, etc.)

# VISIONARY TEAM SCHEDULE

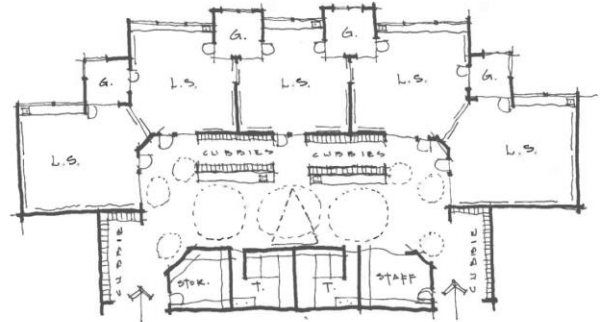
## MEETING #1

- Review “visionary team” charge
- Review “Progressive Learning Environments” presentation
- Discuss key questions:
  - What should learning look like in your district?
  - What is successful? / What could be improved?
  - What other staff do you want/need to work with regularly?
  - How could the physical environment improve the concerns/issues?
  - What adjacencies are important to a single grade?
  - Can the learning process be significantly improved if we continue in this direction?



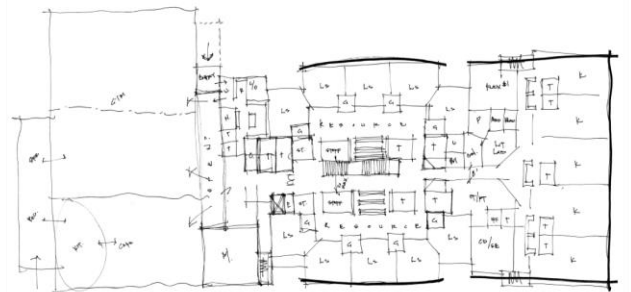
## MEETING #2

- Review refined options generated from the previous meeting
- Discuss key questions:
  - Does this plan meet the objective?
  - What items need to be added?
  - How will transparency / access to team teaching be accomplished?
  - How can this be refined further?
  - What adjacencies are important outside the grade?
  - Can the learning process be significantly improved if we continue in this direction?



## MEETING #3

- Review conceptual floor plan for accuracy
- Review conceptual solution for school safety in the design
- Discuss key questions:
  - Are the adjacencies appropriate?
  - How do students circulate through the building during the day? Staff?
  - What is missing from the plan?
  - Can the learning process be significantly improved if we continue in this direction?



## MEETING #4

- Review refined conceptual plan for accuracy
- Does this plan meet the objective?
- Discuss key questions:
  - How can this be refined further?
  - Can the learning process be significantly improved if we continue in this direction?



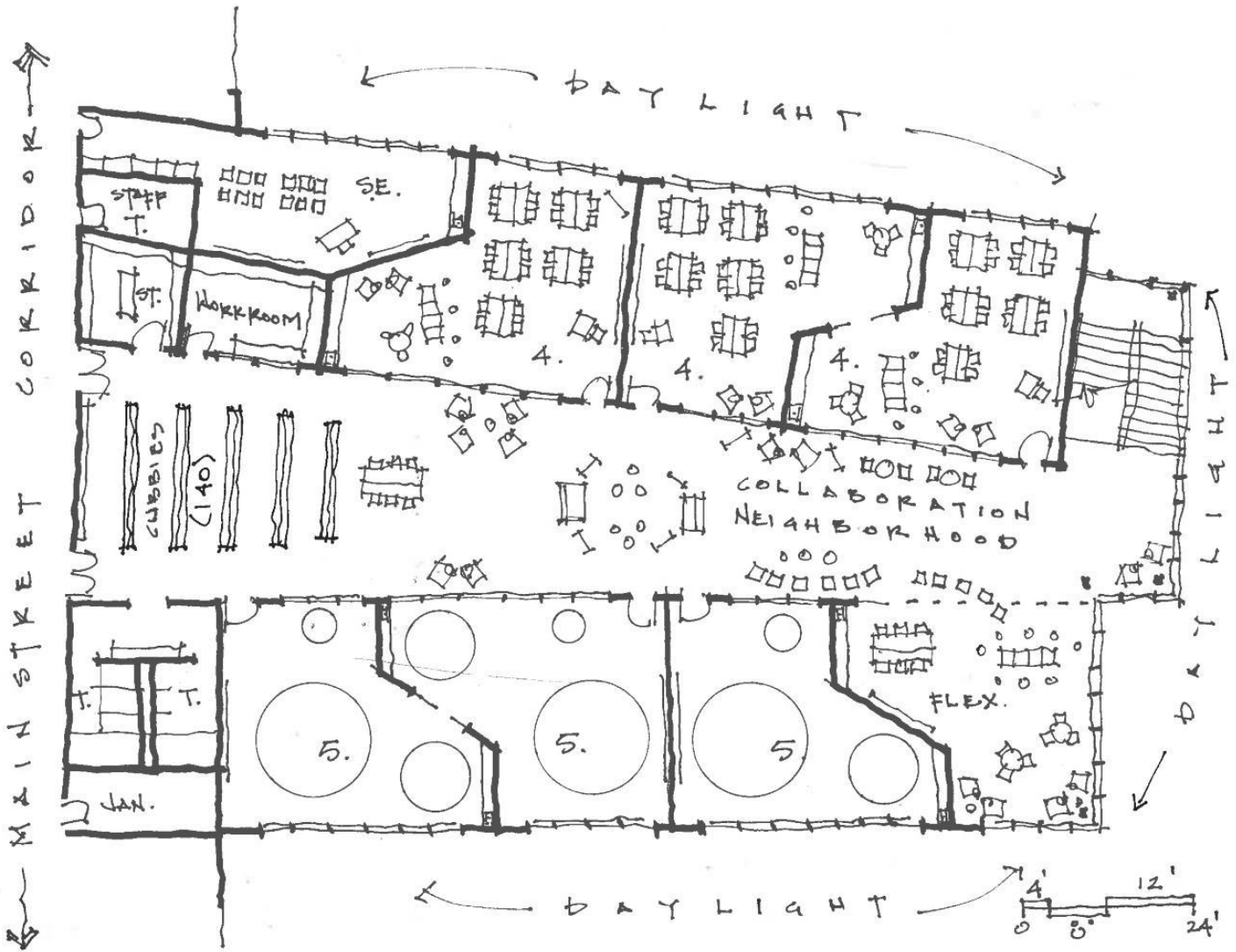


Figure 1 Visionary Team Design from Williams Bay Elementary

Although a significant part of the “big picture planning” involves the visionary team, EUA will meet with all staff to solicit feedback and understanding of specific requirements for individual spaces. The visionary team remains a valuable resource to the process and Board, even after the conclusion of the visioning process. Opportunities include:

- Participation in presentation to School Board about the Schematic Design process
- Review of interior design themes
- Review of interior design material selections
- Participation in furniture selection tours\*
- Participation in furniture selection demonstrations\*
- Participation in furniture selection demonstration feedback\*
- Guiding staff on the use of the learning environments

\*If EUA is retained to coordinate furniture, fixture and equipment (FF&E) selection.