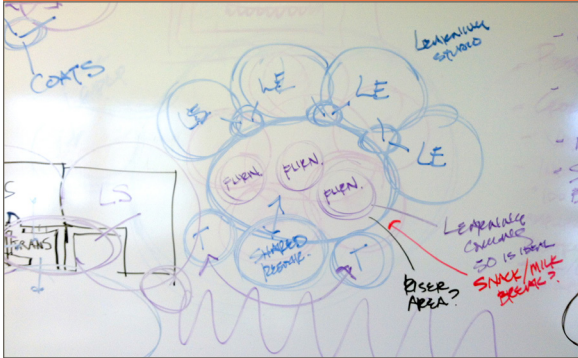


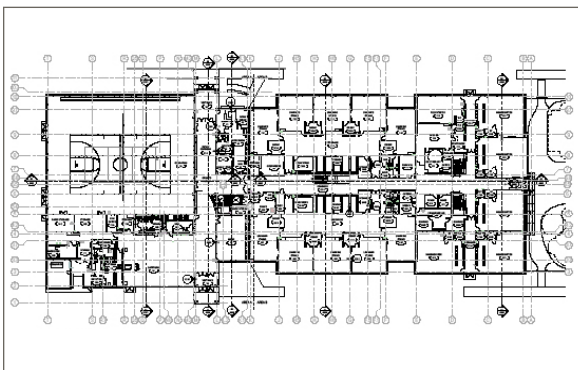
All images are from Lake Mills Elementary School 2012



Preliminary Bubble Diagram



Preliminary Floor Plan



Construction Document



Final Exterior Image

REFERENDUM PASSES

SCHEMATIC DESIGN

Following the community's approval of a facilities referendum, the design process begins. The first phase is known as Schematic Design, and is highly collaborative between the school district staff and EUA's architectural team. The Schematic Design process includes developing drawings and renderings that provide definition of functional interior and exterior spaces for all project components. Visual representations of space, buildings, and floor plans are typically produced within a four-six month time frame and reflect the needs and vision of the school district.

4-6 MONTHS

DESIGN DEVELOPMENT

Once Schematic Design is complete, coordination with consultants and district staff for mechanical, electrical, plumbing, and fire protection systems are defined and documented, and fixtures, furniture, and material selections are finalized. A coordinated review with the construction manager allows for further budget analysis, suggested cost savings, and constructibility improvements. Modifications to design at this stage may be made to improve efficiency and maintain the referendum budget. This process typically takes between four and six months to complete.

4-6 MONTHS

CONSTRUCTION DOCUMENTS

In the final design process, the architectural team adds a high level of detail and specifications for all design elements, systems, and building structure. This set of "detailed instructions" is used by the construction manager for bidding with all trades. These documents are referenced throughout the building process. This process typically takes between four and six months to complete.

4-6 MONTHS

CONSTRUCTION BEGINS

The construction timeline varies based on project and building type, size, complexity, and the school district calendar.

PROJECT COMPLETION