

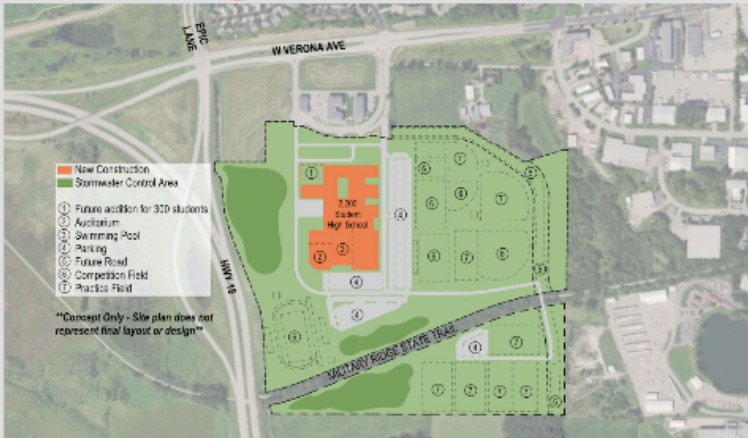


Verona Area School District

THE BASE PLAN: \$153.4M

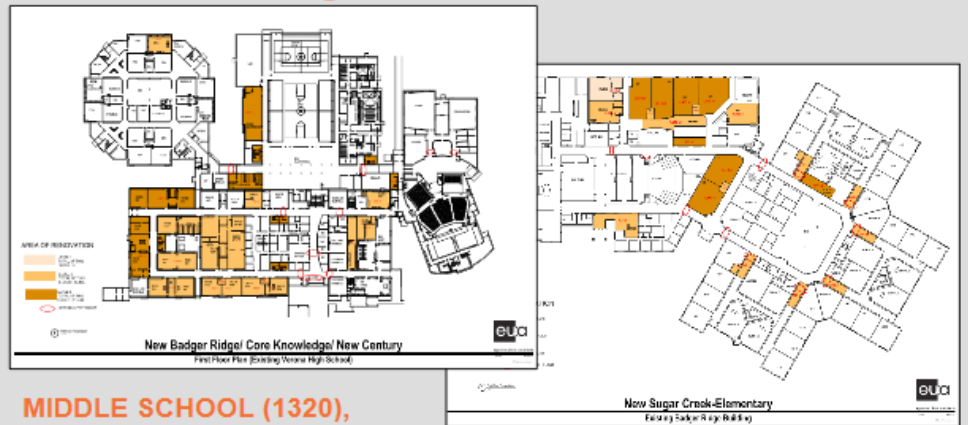
Estimated Opening: Fall 2020

● New High School: \$136M



HIGH SCHOOL (2200 w/core spaces for 2500)
Does NOT include Pool, Auditorium, Competition Fields

● Remodeling to VAHS & BRMS: \$6.2M



MIDDLE SCHOOL (1320),
Core Knowledge (K-8), and
New Century (K-5, future K-8)

ELEMENTARY SCHOOL (525)
(future capacity: 825)

● Capital Maintenance District-Wide: \$11.2M

BASE PLAN + NEW ELEMENTARY SCHOOL: \$186.1M

● Base Plan: \$153.4M

New High School, remodeling to convert existing schools for Middle (VAHS) and Elementary (BRMS), and District-wide capital maintenance

● New Elementary School: \$32.7M

(Locust Dr., south of Cathedral Point Subdivision)

- 525 students
- Estimated open fall 2019



ADDITIONS TO THE BASE PLAN (Additions to New High School)

- Auditorium: \$9.4M
- Athletic competition fields/facilities: \$6.5M
- Pool: \$12.5M



LEARN MORE ABOUT FACILITIES PLANNING EFFORTS AT: VERONA.K12.WI.US/FACILITIESPLANNING